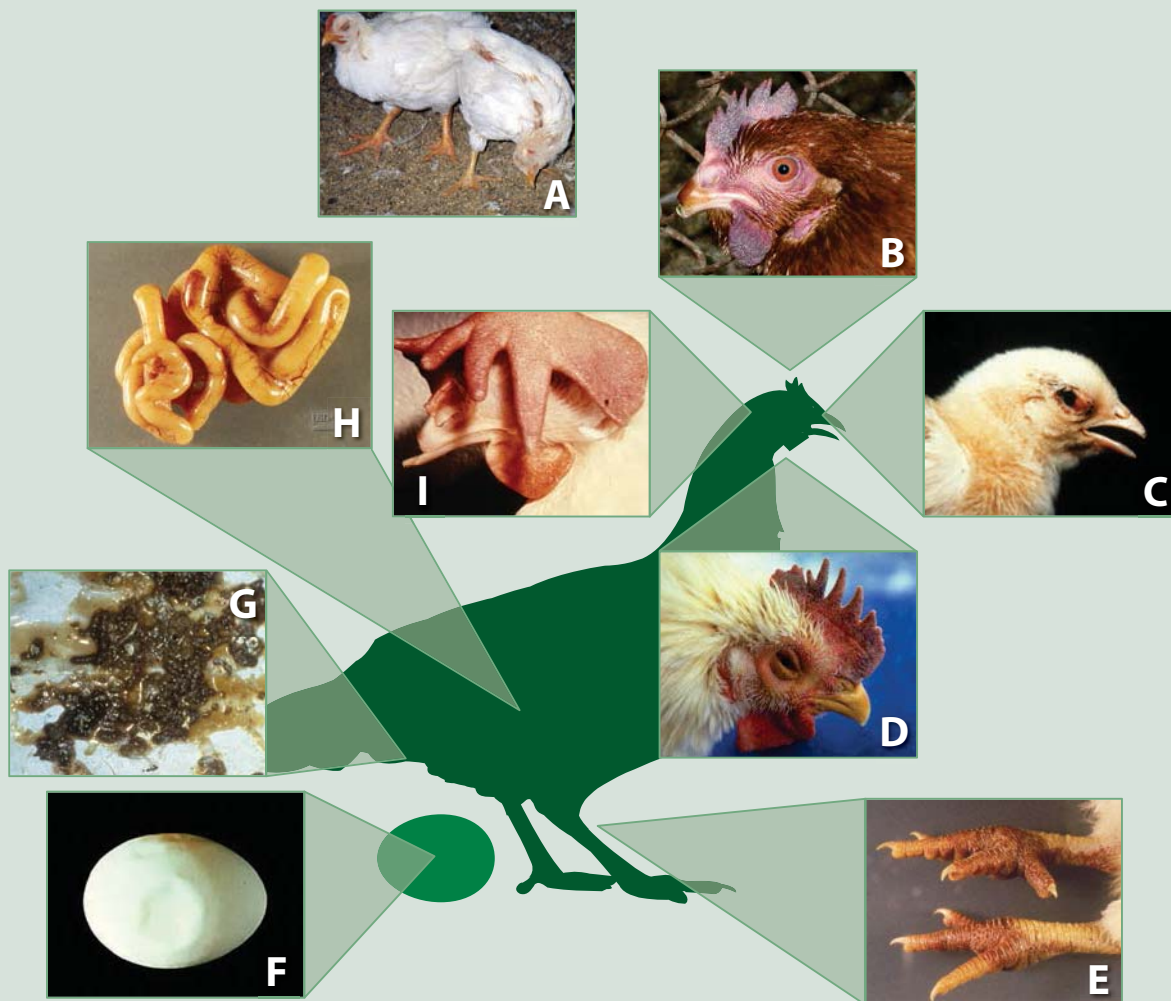


## Clinical Signs of HPAI and ND



### HPAI and ND Clinical Signs

- A.** Neurologic signs, which may include depression, muscular tremors, drooping wings, twisting of the head and neck, circling, and complete paralysis
- B.** Cyanosis of the wattle and comb
- C.** Respiratory signs such as sneezing, gasping for air, nasal discharge, and increased respiratory effort with tail bob
- D.** Swelling of tissues around the eyes and in the neck
- E.** Shanks are swollen (edema) and excessively reddened (hemorrhages)
- F.** Decreased egg production, soft-shelled or misshapen eggs
- G.** Greenish, watery diarrhea
- H.** Hemorrhagic lesions of the gastrointestinal tract
- I.** Congestion and edema of the comb and wattles

**Fig. 18-17.** Photo source: USDA; Graphic illustration: Dani Ausen, Iowa State University